

Affinity Cowl/Scarf



©Crystal Bucholz
crystal@crystalized-designs.com

www.crystalized-designs.com

[Shop](#) [Blog](#) [Newsletter](#) [Facebook](#)
[Craftsy](#) [Etsy](#) [Ravelry](#) [Storenvy](#)

Materials

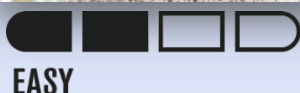


- o Yarn: Any DK or worsted weight yarn will work. A thinner worsted weight works best.
Caron Simply Soft used for scarf on page 1; Yarn Baby LLC DK weight yarn used for picture on this page
- 250 yards for small child scarf & thin width cowl;
- 500 yards for older child, short, medium scarf and thick cowl; 700 yards for large scarf
- o Hook: Boye H/8-5.00mm
- o Optional: 7/8" buttons, 1" or larger buttons (please read notes about buttoned cowl on last page for amount of buttons needed)

Friendship!

This cowl was designed when a dear friend gifted me a skein of yarn from [Yarn Baby](#). This amazing yarn inspired a design that would be perfect for variegated yarns but beautiful enough for solids.

Multiple cowl and scarf sizes offers more choices out of one pattern!



Sizing

- These measurements are approximated, and actual subjects may vary.
- Gauge: H hook 15 dc = 4"
7 rows = 4"
- This pattern comes in cowl and scarf variations with a variety of sizes of both variations. See each section for measurements.

Pattern Key

- Ch: Chain
- Sc: Single crochet
- Dc: Double Crochet
- Sk: Skip
- Sp: Space
- Dc4tog: Double crochet 4 together
- St(s): Stitch(es)
- * *: Repeat instructions between symbols until indicated
- []: Repeat instructions all in one stitch

You are free to sell your work from this pattern but may not share, copy or reproduce this pattern, in part or in whole. Photographs are copyright protected and may not be used. When selling your work, include a link back to this pattern as well as the following, "Pattern by Crystalized Designs"

THANK YOU FOR YOUR PURCHASE!!!

Special Pattern Notes: Beginning chain 1 does not count as a stitch. Always work the first stitch into turning stitch unless noted.

Stitch counts will be listed with the thin width first, thick width second. Fans, or 9 dc in a group, are used for stitch counts.

Each side has a slightly different look making this scarf/cowl reversible. Either side can be the right or wrong side.

Specialty Stitching: Double crochet 4 together (dc4tog): YO and insert hook into stitch indicated, YO and pull up a loop, YO and pull through 2 loops on hook, *YO and insert hook into next stitch, YO and pull up a loop, YO and pull through 2 loops on hook* repeat 2 more times (5 loops on hook), YO and pull through all loops on hook

Scarf Pattern Instructions (see below for chart instructions)

Thin Width: Ch 18 (4" width)

Thick Width: Ch 26 (6" width)

Row 1: Starting in 2nd ch, sc across (17, 25 sts)

Row 2: Ch 1, turn, sc in same, *sk 3, 9 dc in next, sk 3, sc next* repeat across (2, 3 fans)

Row 3: Ch 3 (counts as dc, ch 1), turn, *dc4tog, ch 3, sc next, ch 3, dc4tog, ch 1, sk 1* repeat across, dc in last st {would be the skipped st in the sequence} (4, 6 dc4tog)

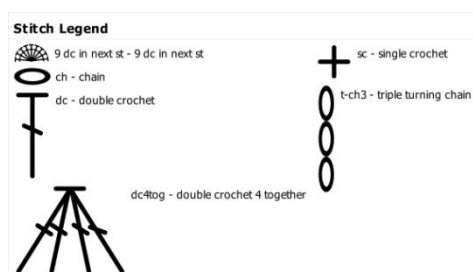
Row 4: Ch 1, turn, sc in same, 9 dc in next sc, *sc next ch 1 sp, 9 dc in next sc* repeat across, sc in 3rd ch (2, 3 fans)

Repeat Row 3 and 4 until piece measures according to chart below (ending on Row 3):

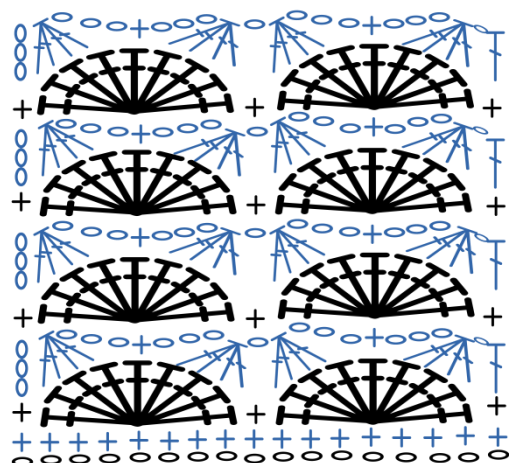
Size	Length
Young child	36"
Older child	48"
Short	55"
Medium	70"
Long	82"

Edging: Ch 1, turn, sc in same, *sc in next ch 1 sp, sc in dc4tog, 2 sc in next ch 3 sp, sc next sc, 2 sc in next ch 3 sp, sc in next dc4tog* repeat across, sc in 3rd ch (18, 26 sts)

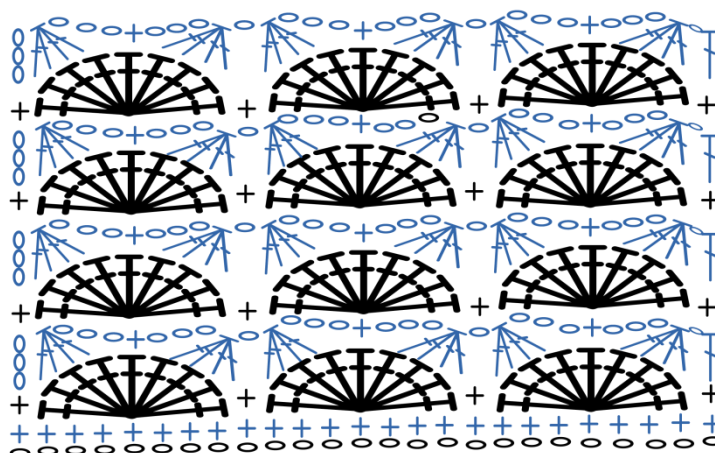
Optional: Add fringe



Thin Scarf



Thick Scarf



Cowl Pattern Instructions (see below for chart instructions)

Thin Width: Ch 34 (8" width)

Thick Width: Ch 42 (10" width)

Row 1: Starting in 2nd ch, sc across (33, 41 sts)

Row 2: Ch 1, turn, sc in same, *sk 3, 9 dc in next, sk 3, sc next* repeat across (4, 5 fans)

Row 3: Ch 3 (counts as dc, ch 1), turn, *dc4tog, ch 3, sc next, ch 3, dc4tog, ch 1, sk 1* repeat across, dc in last st {would be the skipped st in the sequence} (8, 10 dc4tog)

Row 4: Ch 1, turn, sc in same, 9 dc in next sc, *sc next ch 1 sp, 9 dc in next sc* repeat across, sc in 3rd ch (4, 5 fans)

Repeat Row 3 and 4 until piece measures according to chart below (end on Row 3 for joined cowl, end on Row 4 for buttoned cowl). Continue below for desired closure.

Size	Length
Tight Single Wrap	26"
Loose Single Wrap	32"
Double Wrap	48"

Joined Cowl:

Ch 1, turn, sc in same, *sc in next ch 1 sp, sc in dc4tog, 3 sc in next ch 3 sp, sc next sc, 3 sc in next ch 3 sp, sc in next dc4tog* repeat across, sc in 3rd ch (17, 25 sts)

Match both sc ends with wrong sides together. Slst through first sc of each end, continue across. Finish off and weave in ends. Turn right side out.

Button Cowl:

**** NOTE:** Row 5 below has a button hole (ch 2) for each fan stitch you have in your repeats. If you want less button holes, work [dc4tog, ch 3, sc in same as last leg of dc4tog, ch 4, sk 1, sc next, ch 3, dc4tog starting in same st as last sc, ch 1] where you want a button hole and [dc4tog, ch 3, sc next, ch 3, dc4tog, ch 1] where you do not want a button hole. If not making button holes for each fan, you will need to sc in the corresponding sc.

Row 5: Ch 3 (counts as dc, ch 1), turn, *dc4tog, ch 3, in same as last leg of dc4tog, ch 2, sk 1, sc next, ch 3, dc4tog starting in same st as last sc, ch 1, sk 1* repeat across, dc in last st {would be the skipped st in the sequence} (8, 10 dc4tog)

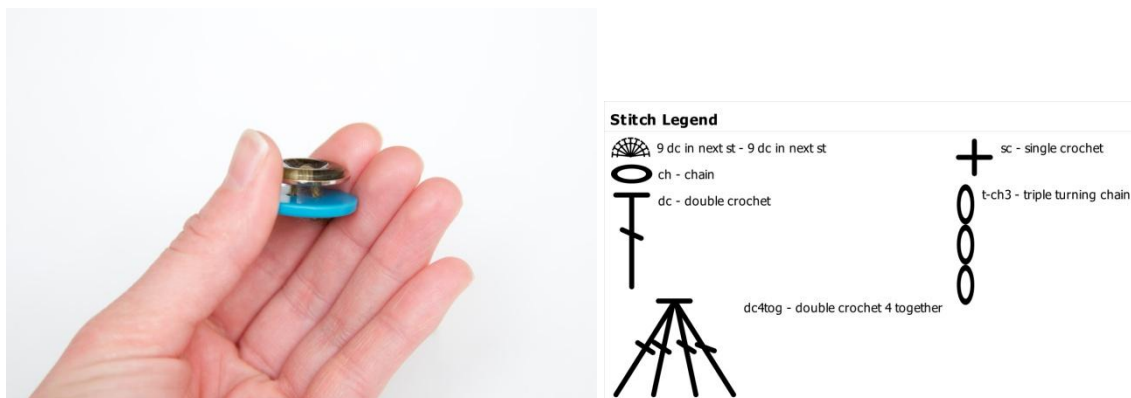
Row 6: Ch 1, turn, sc in same, 9 dc in next ch 2 sp, *sc next ch 1 sp, 9 dc in next ch 2 sp* repeat across, sc in 3rd ch (4, 5 fans)

**If you don't want the buttons too close the edge, repeat Row 3 and 4 once or twice more.

Finish off and weave in ends.

Sewn buttons: Sew desired amount of 7/8" buttons along bottom of Cowl with right side facing. Make sure they match up with the button holes when worn. I suggest lightly knotting them and checking position before securing them on.

Changeable buttons: You'll need double the amount of buttons as recommended, equal amounts of 7/8" and 1"+. Sew one of each size button together using corresponding yarn. Work front button through button holes. Work back button through any space on back side of cowl. Buttons are not actually attached to the Cowl. The back side will have the larger button (1" or larger) while the front will have the 7/8" button like the picture below.



Thick Cowl (one repeat less for thin cowl)

